

Create a New Project

Open an Existing Project

View Shopping Cart

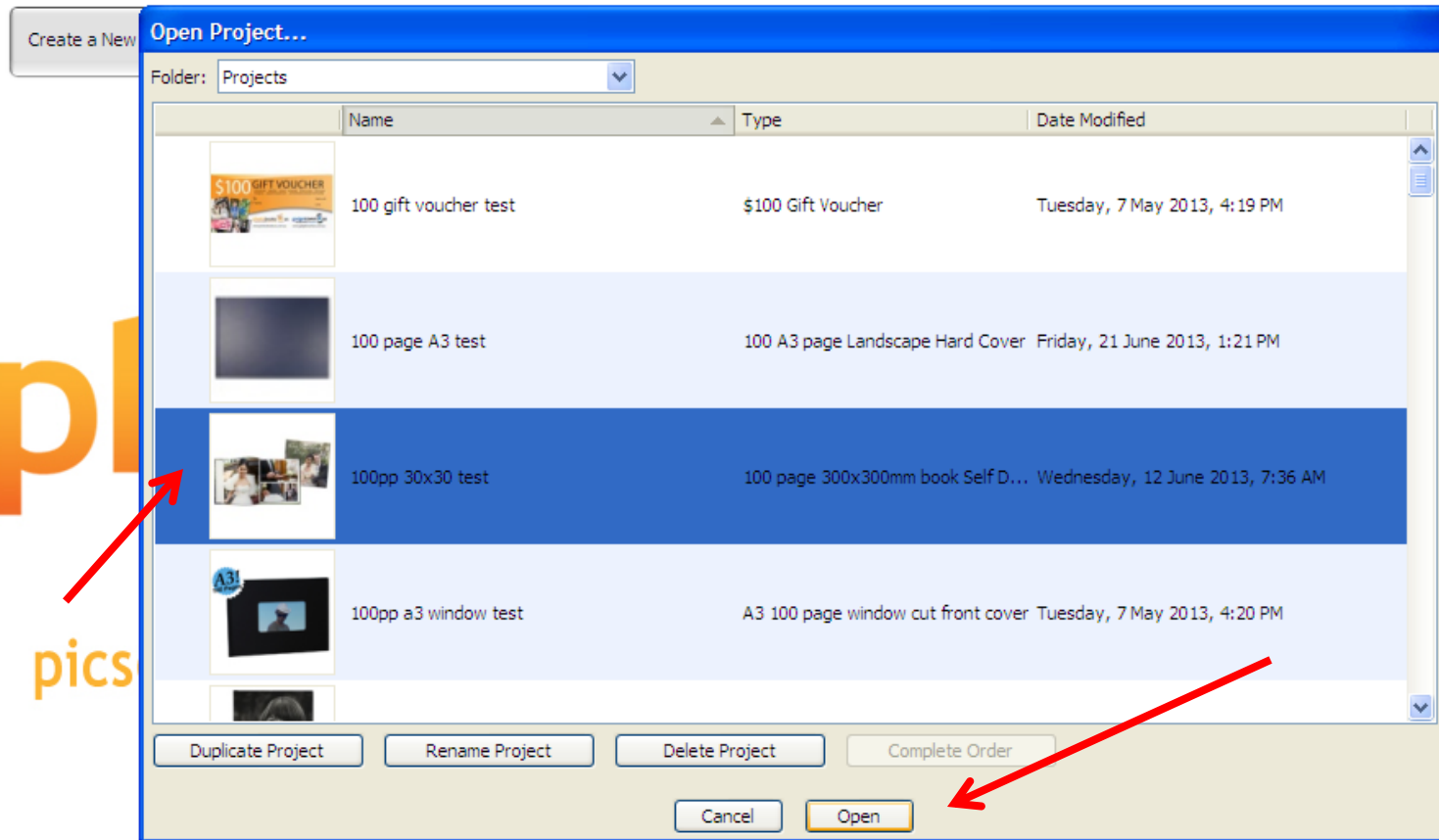
photo**books**  **us**

pics@photobooksrus.com.au www.photobooksrus.com.au

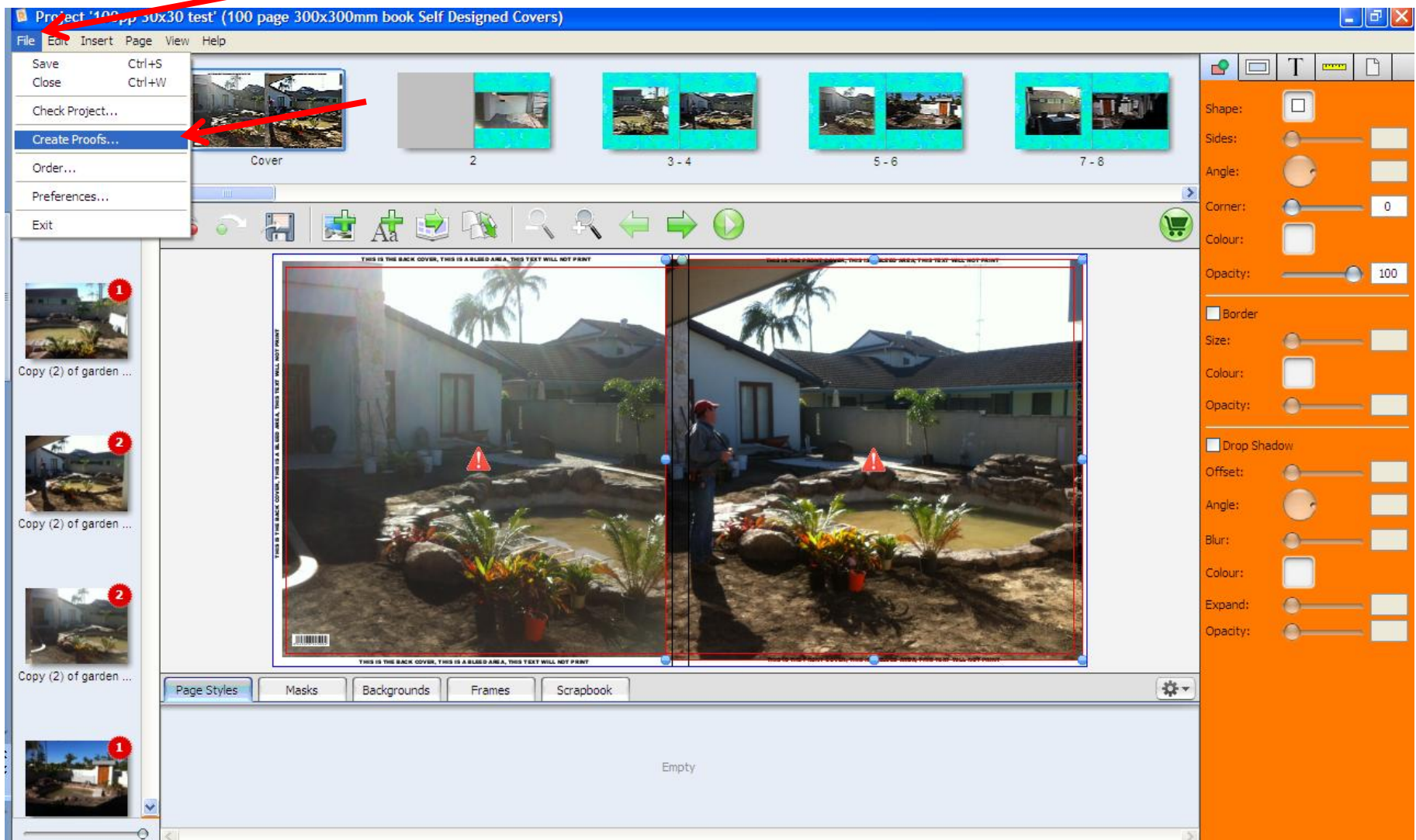
v3.2.0 (3.2.0) - Tuesday, 1 May 2012

Quit

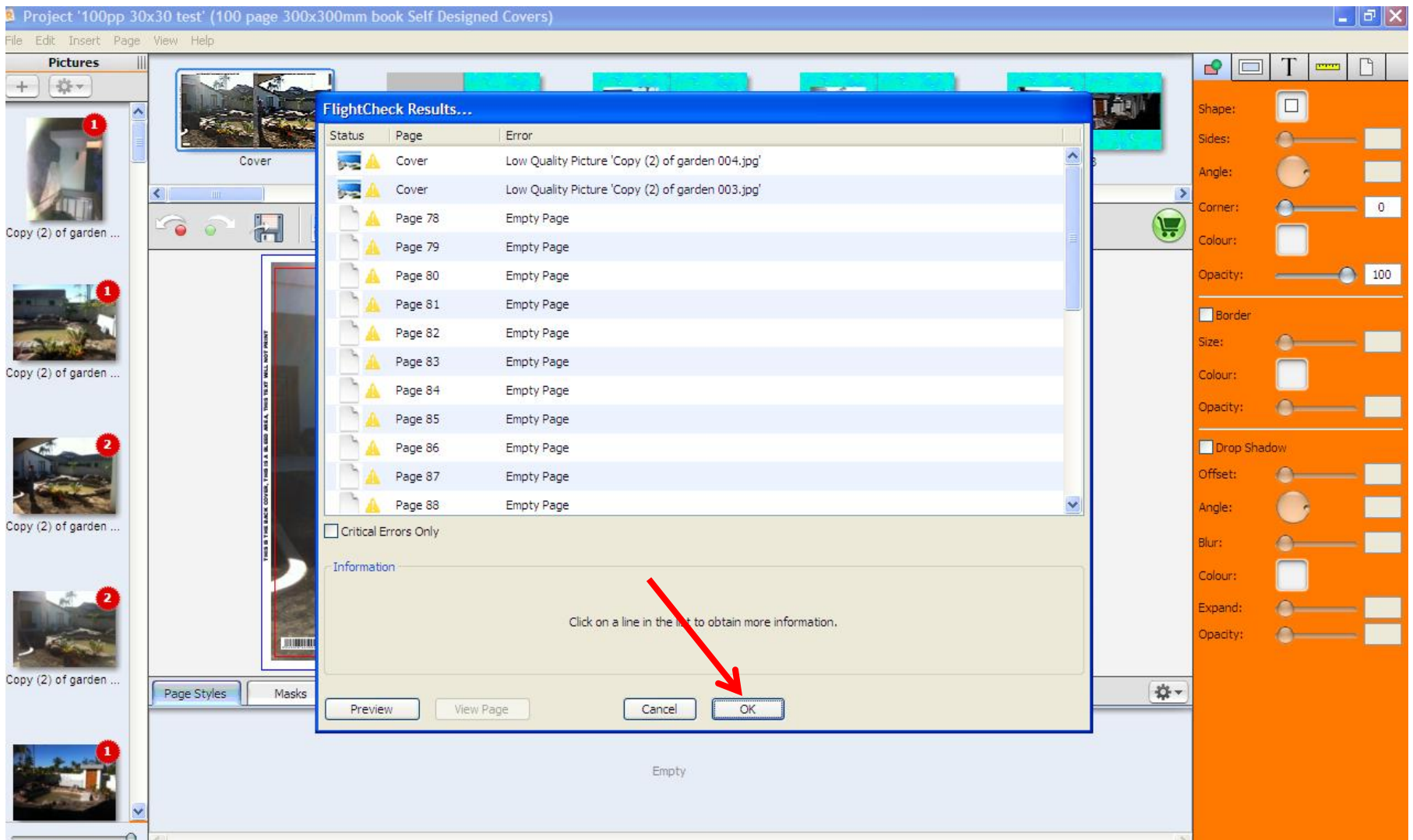
To create a set of proofs open up the Existing Project Menu



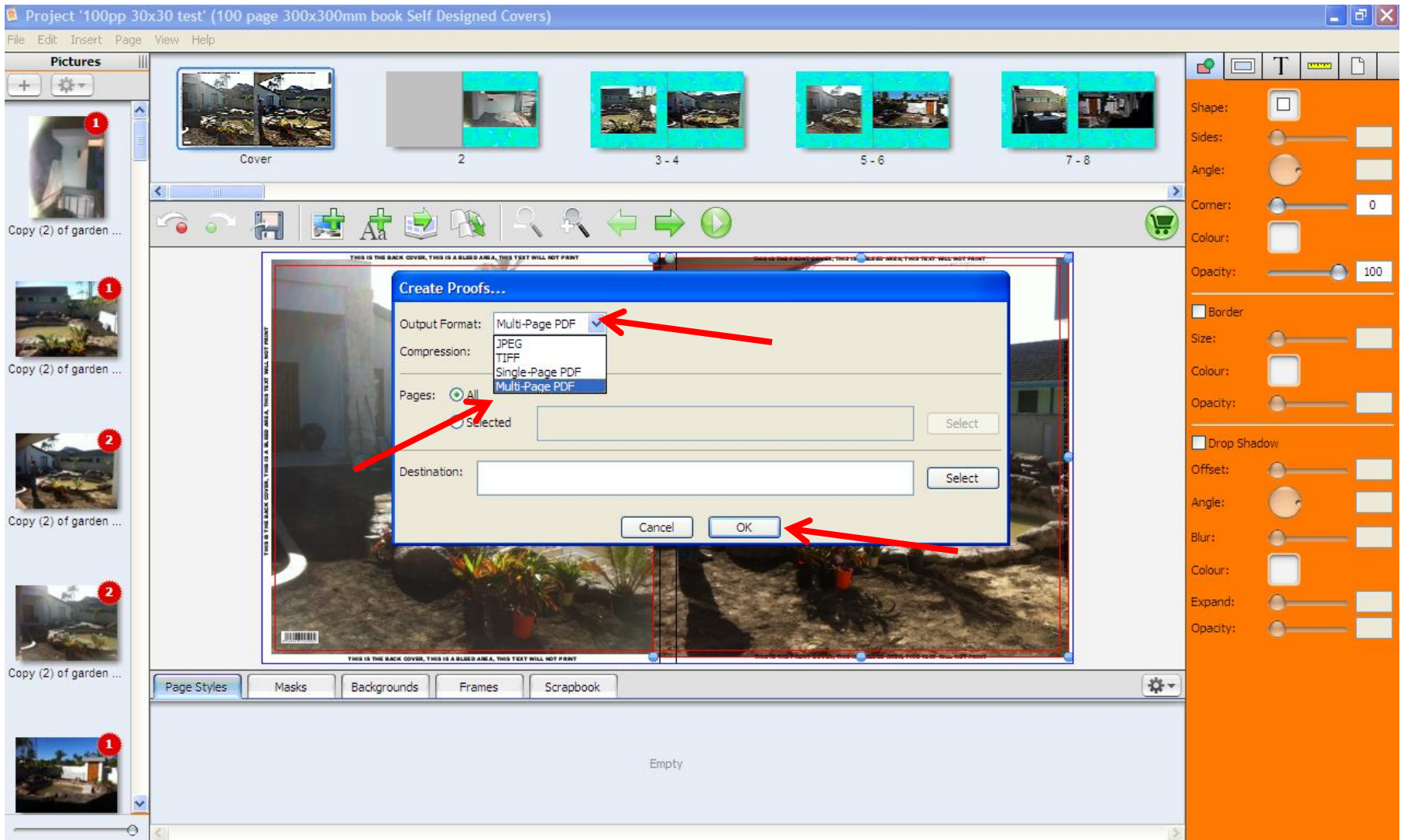
Find your project in the list and open it



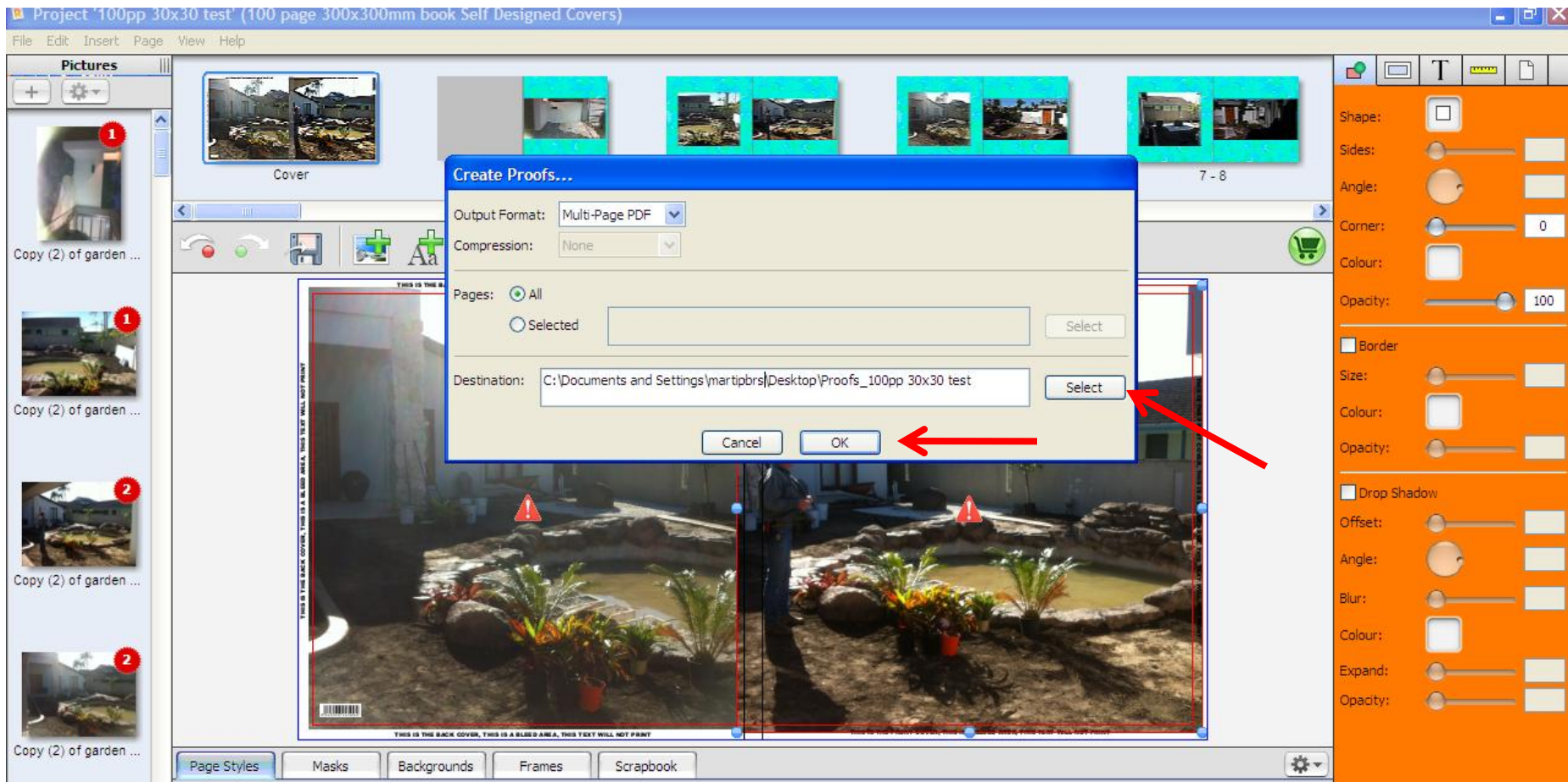
Select the File menu in the top left hand corner, move down to create proofs and select it



The Software will perform a pre print check and flag any issues that may cause a problem
You can fix these errors or ignore them, PBRS advises you to fix them, If you are happy with
The Project then click OK.



The Software will now ask you what type of proof to create, click on the drop down menu. PBRS suggests a multi page PDF this will be the easiest to view on your screen.



The Software will now ask you what location you would like to save the proofs to. Click on select and guide the software to the appropriate location on your computer and click OK. It will now create a set of proofs and save them to that location. When it has finished creating the proofs locate the file on your computer and open it. These proofs are a print representation to show you location of images, text fonts and text Layout. A low resolution or suspect image will still have the warning RED ! In it as per the above image and will print differently to what you can see on the screen.